

U.S. BATTERY

MANUFACTURING COMPANY

BATTERY TERMINALS OPTIONS LIST

S = Standard; O = Optional; ONR = Optional but Not Recommended,
 MIC = Molded in Cover; SdTr = Side Terminal; *DWL = Double Wide "L"

	UTL	UT	OFFSET "S"	DUAL	SAE	LARGE "L"	SMALL "L"	FLAT BLOCK	FLAG	BUS LUG
22NF-HC	O	O	O	-	S	-	O	-	-	-
22FHC	O	O	S	-	O	-	O	-	-	-
24TM	-	STUD+SAE	-	MIC	STUD+SAE	-	-	-	-	-
27TM	-	STUD+SAE	-	MIC	STUD+SAE	-	-	-	-	-
US12V XC	S	O	O	O	O	O	O	O	-	-
31TMX	-	STUD+SAE	-	MIC	STUD+SAE	-	-	-	-	-
16TF-HC XC	O	O	O	O	S	O	O	O	-	-
EV-145 XC	O	O	O	-	O	S	O	-	-	-
8D-HC XC	O	O	O	O	S	O	O	O	O	O
US185 XC	O	O	S	O	O	O	O	O	-	-
US185HC XC	O	O	S	O	O	O	O	O	-	-
US185E XC	O	O	S	O	O	O	O	O	-	-
BIG JOE XC	O	O	O	O	S	O	O	O	-	-
1-HC XC	O	O	O	O	S	O	O	O	-	-
US1800 XC	S	O	O	O	O	O	O	O	-	-
US2000 XC	S	O	O	O	O	O	O	O	-	-
US2200 XC	S	O	O	O	O	O	O	O	-	-
US125 XC	S	O	O	O	O	O	O	O	-	-
US145 XC	S	O	O	O	O	O	O	O	-	-
US250 XC	ONR	ONR	S	O	O	O	O	O	-	-
US250HC XC	ONR	ONR	S	O	O	O	O	O	-	-
US250E XC	ONR	ONR	S	O	O	O	O	O	-	-
US305 XC	ONR	ONR	S	O	O	O	O	O	-	-
US305HC XC	ONR	ONR	S	O	O	O	O	O	-	-
US305E XC	ONR	ONR	S	O	O	O	O	O	-	-
L16 XC	ONR	ONR	O	ONR	O	S	O	O	-	-
L16HC XC	ONR	ONR	O	ONR	O	S	O	O	-	-
L16E XC	ONR	ONR	O	ONR	O	S	O	O	-	-
US8VGC XC	S	O	O	-	O	O	O	O	-	-
8VGCXC XC	S	O	O	-	O	O	O	O	-	-
11-4-1 XC	-	-	-	-	O	S	O	-	O	-
13-4-1 XC	-	-	-	-	O	S	-	-	O	-
15-4-1 XC	-	-	-	-	O	S	-	-	O	-
17-4-1 XC	-	-	-	-	O	S	-	-	O	-
19-4-1 XC	-	-	-	-	-	-	-	-	*DWL	-



The U.S. Battery Connection

To use this chart, select:

- Battery voltage
- Battery type (physical size), when possible move to the largest physical size and amp-hour capacity to ensure maximum battery life.
- Amp-hour capacity requirement (how much current will be required over how many hours).

Three things to keep in mind:

- When connecting batteries in series, you increase the voltage and the amp-hour capacity remains the same. (Figure 1)
- When connecting in parallel, the amp-hour capacity increases and the voltage remains the same. (Figure 9)
- To increase both numbers, connect multiple sets in series /parallel (see diagrams below). (Figure 3)

12 VOLT SYSTEM

Battery Type	Voltage	Capacity AH	One string In Series		Two Strings In Series/Parallel		Three Strings In Series/Parallel				
			Qty	Total Capacity	Figure No.	Qty	Total Capacity	Figure No.	Qty	Total Capacity	Figure No.
US 1800 XC	6	208	2	208	1	4	408	2	6	624	3
US 2000 XC	6	216	2	216	1	4	432	2	6	648	3
US 2200 XC	6	232	2	232	1	4	464	2	6	696	3
US 125 XC	6	242	2	242	1	4	484	2	6	726	3
US 145 XC	6	251	2	251	1	4	502	2	6	753	3
US 250E XC	6	229	2	229	1	4	458	2	6	687	3
US 250 XC	6	258	2	258	1	4	516	2	6	774	3
US 250HC XC	6	283	2	283	1	4	566	2	6	849	3
US 305E XC	6	286	2	286	1	4	572	2	6	858	3
US 305 XC	6	305	2	305	1	4	610	2	6	915	3
US 305HC XC	6	335	2	335	1	4	670	2	6	1005	3
L16E XC	6	360	2	360	1	4	720	2	6	1080	3
L16 XC	6	380	2	380	1	4	760	2	6	1140	3
L16HC XC	6	420	2	420	1	4	840	2	6	1260	3
AGM 6V	6	205	2	205	1	4	410	2	6	615	3
AGM 4D	12	180	1	180	-	2	360	7	3	540	8
AGM 8D	12	250	1	250	-	2	500	7	3	750	8

24 VOLT SYSTEM

Battery Type	Voltage	Capacity AH	One string In Series		Two Strings In Series/Parallel		Three Strings In Series/Parallel				
			Qty	Total Capacity	Figure No.	Qty	Total Capacity	Figure No.	Qty	Total Capacity	Figure No.
US 1800 XC	6	208	4	208	4	8	408	5	12	624	6
US 2000 XC	6	216	4	216	4	8	432	5	12	648	6
US 2200 XC	6	232	4	232	4	8	464	5	12	696	6
US 125 XC	6	242	4	242	4	8	484	5	12	726	6
US 145 XC	6	251	4	251	4	8	502	5	12	756	6
US 250E XC	6	229	4	229	4	8	458	5	12	687	6
US 250 XC	6	258	4	258	4	8	516	5	12	774	6
US 250HC XC	6	283	4	283	4	8	566	5	12	849	6
US 305E XC	6	286	4	286	4	8	572	5	12	858	6
US 305 XC	6	305	4	305	4	8	610	5	12	915	6
US 305HC XC	6	335	4	335	4	8	670	5	12	1005	6
L16E XC	6	360	4	360	4	8	720	5	12	1080	6
L16 XC	6	380	4	380	4	8	760	5	12	1140	6
L16HC XC	6	420	4	420	4	8	840	5	12	1260	6
AGM 6V	6	205	4	205	4	8	410	5	12	615	6
AGM 4D	12	180	2	180	1	4	360	2	6	540	3
AGM 8D	12	250	2	250	1	4	500	2	6	750	3



1675 Sampson Ave.
Corona, CA 92879
(800) 695-0945

1895 Tobacco Road
Augusta, GA 30906
(800) 522-0945

717 North Belair Rd.
Evans, GA 30809
(888) 811-0945

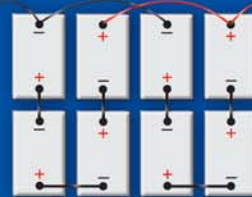
Configuration 1
Double Voltage
Amps Remains the Same



Configuration 3
Double Voltage
Increase Capacity by 3X's



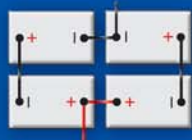
Configuration 5
Quadruple Voltage, Double Capacity



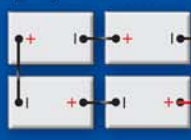
Configuration 7
Double Capacity
Voltage Remains the Same



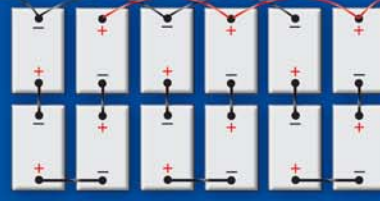
Configuration 2
Double Voltage
Double Capacity



Configuration 4
Quadruple Voltage
Capacity Remains the Same



Configuration 6
Quadruple Voltage, Triple Capacity



Configuration 8
Triple Capacity
Voltage Remains the Same



U.S. BATTERY

DEEP CYCLE BATTERIES

US BATTERY MODEL	AMP HOURS (20 hr. rate)	AMP HOURS (5 hr. rate)	M.C.A. @ 32° F	MINUTES @ 75 AMPS	MINUTES @ 25 AMPS	DIMENSIONS, Inches (mm)			COVER AND CASE	PALLET QTY
						LENGTH	WIDTH	HEIGHT		
6 VOLT GOLF CAR AND MULTI PURPOSE										
US 1800 XC	208	157	-	107	392	10 1/4 (260)	7 1/8 (181)	11 1/4 (286)	BLK/BLK	48
US 2000 XC	216	172	-	114	445	10 1/4 (260)	7 1/8 (181)	11 1/4 (286)	BLK/BLK	48
US 2200 XC	232	181	-	122	474	10 1/4 (260)	7 1/8 (181)	11 1/4 (286)	RED/WHT	48
US 125 XC	242	198	-	140	517	10 1/4 (260)	7 1/8 (181)	11 1/4 (286)	GRN/WHT	48
US 145 XC	251	216	-	154	562	10 1/4 (260)	7 1/8 (181)	11 7/8 (302)	BLU/WHT	48

8 VOLT GOLF CAR AND MULTI PURPOSE

US BATTERY MODEL	AMP HOURS (20 hr. rate)	AMP HOURS (5 hr. rate)	M.C.A. @ 32° F	MINUTES @ 75 AMPS	MINUTES @ 25 AMPS	DIMENSIONS, Inches (mm)	COVER AND CASE	PALLET QTY		
									LENGTH	WIDTH
6 VOLT SWEEPER/SCRUBBER AND MULTI PURPOSE										
US 8VGC XC	170	138	128 MIN	90	337	10 1/4 (260)	7 1/8 (181)	11 1/4 (286)	RED/WHT	48
US 8VGCXC XC	183	141	136 MIN	95	345	10 1/4 (260)	7 1/8 (181)	11 1/4 (286)	BLU/WHT	48
US8VGCE XC	121	101	90 MIN	60	222	10 1/4 (260)	7 1/8 (181)	11 1/4 (286)	WHT/BLK	48

6 VOLT SWEEPER/SCRUBBER AND MULTI PURPOSE

US 250 XC	255	217	-	159	570	11 5/8 (295)	7 1/8 (181)	11 5/8 (295)	BLK/BLK	36
US 250HC XC	280	239	-	178	635	11 5/8 (295)	7 1/8 (181)	11 5/8 (295)	BLU/BLU	36
US 250E XC	225	195	-	140	505	11 5/8 (295)	7 1/8 (181)	11 5/8 (295)	BLU/BLK	36
US 305 XC	310	253	-	185	715	11 7/8 (302)	7 1/8 (181)	14 5/8 (371)	BLK/BLK	18
US 305HC XC	340	283	-	215	790	11 7/8 (302)	7 1/8 (181)	14 5/8 (371)	BLU/BLU	18
US 305E XC	290	245	-	182	660	11 7/8 (302)	7 1/8 (181)	14 5/8 (371)	BLU/BLK	18
L16 XC	380	296	-	225	810	11 7/8 (302)	7 1/8 (181)	16 3/4 (425)	BLK/BLK	18
L16HC XC	420	322	-	250	940	11 7/8 (302)	7 1/8 (181)	16 3/4 (425)	BLU/BLU	18
L16E XC	360	270	-	198	795	11 7/8 (302)	7 1/8 (181)	16 3/4 (425)	BLU/BLK	18
1 HC XC	95	-	-	44	165	8 3/4 (222)	6 7/8 (175)	9 (175)	BLK/BLK	72

12 VOLT SWEEPER/SCRUBBER AND MULTI PURPOSE

US 12V XC	155	122	-	77	292	13 1/8 (333)	7 1/16 (179)	11 3/8 (289)	BLU/BLU	36
EV 145 XC	150	120	-	76	286	13 5/8 (346)	6 3/4 (171)	11 7/8 (301)	BLK/BLK	36
US 185 XC	200	158	-	106	398	15 5/8 (397)	7 1/16 (179)	14 7/8 (378)	BLK/BLK	14
US 185HC XC	220	172	-	117	443	15 5/8 (397)	7 1/16 (179)	14 7/8 (378)	BLK/BLK	14
US 185E XC	185	133	-	93	321	15 5/8 (397)	7 1/16 (179)	14 7/8 (378)	BLK/BLK	14

8 VOLT MARINE

11-4-1 XC	145	-	-	101	323	19 1/4 (489)	7 1/2 (191)	10 3/4 (273)	RUBBER	24
13-4-1 XC	170	-	-	116	380	21 7/16 (555)	7 1/2 (191)	10 1/2 (267)	RUBBER	24
15-4-1 XC	195	-	-	133	440	24 3/8 (619)	7 7/16 (189)	10 1/2 (267)	RUBBER	16
17-4-1 XC	220	-	-	147	490	27 7/16 (698)	7 7/16 (189)	10 1/2 (267)	RUBBER	16
19-4-1 XC	245	-	-	162	545	26 3/4 (679)	8 7/16 (216)	11 1/8 (282)	RUBBER	16

12 VOLT MARINE

24TM	85	-	675	-	125	10 3/4 (273)	6 3/4 (171)	9 3/4 (248)	BLK/BLK	72
27TM	105	75	775	40	155	12 3/4 (324)	6 3/4 (171)	9 3/4 (248)	BLK/BLK	54
31TMX	130	99	1090	58	227	13 3/4 (349)	6 3/4 (171)	9 3/4 (248)	BLK/BLK	54

12 VOLT MULTI PURPOSE

16TF-HC XC	120	-	-	-	250	16 9/16 (421)	7 1/8 (181)	11 1/8 (283)	RUBBER	28
22F-HC XC	65	-	-	-	98	9 1/2 (241)	6 9/16 (167)	8 5/16 (211)	BLK/WHT	72
22NF-HC XC	60	-	-	-	95	9 7/16 (240)	5 1/2 (140)	9 (229)	RED/WHT	84
8D-HC XC	240	-	-	-	455	20 3/4 (527)	11 1/8 (283)	9 7/8 (251)	BLK/BLK	16
BIG JOE XC	107	-	-	-	185	18 (457)	7 1/4 (184)	9 5/8 (244)	RUBBER	28

SPECIFICATIONS

LOW MAINTENANCE STARTING BATTERIES

BCI GROUP SIZE	US BATTERY MODEL	C.C.A. @ 0° F	C.A. @ 32° F	MINUTES @ 25 AMPS	DIMENSIONS, Inches (mm)			COVER AND CASE	PALLET QTY
					LENGTH	WIDTH	HEIGHT		
6 VOLT AUTOMOTIVE AND COMMERCIAL									
2	2	675	820	185	10 3/8 (264)	7 1/8 (181)	9 3/8 (238)	BLK/BLK	72
2N	2N	625	765	200	10 (254)	5 9/16 (141)	9 (229)	RUBBER	84
2E	2E	600	730	180	19 3/8 (492)	4 1/8 (105)	9 1/8 (232)	RUBBER	60
3EH	3EH	875	1070	300	19 5/16 (491)	4 3/16 (106)	9 13/16 (249)	BLK/BLK	60
4EH	4EH	1000	1220	325	19 5/16 (491)	5 (491)	9 13/16 (249)	RUBBER	48
4	H4	1000	1220	320	12 1/2 (318)	6 7/8 (175)	9 3/8 (238)	BLK/BLK	54
17HF	17HF	360	440	115	7 3/8 (187)	6 7/8 (175)	9 1/4 (235)	RUBBER	90
19L	19L	525	640	110	8 3/16 (208)	6 11/16 (170)	7 7/16 (189)	RUBBER	90
8 VOLT TRACTOR AND COMMERCIAL									
1	1-8V	400	488	140	8 7/8 (225)	6 13/16 (173)	8 1/2 (216)	RUBBER	72
2	2-8V	500	610	140	10 3/8 (264)	6 15/16 (176)	9 1/16 (230)	RUBBER	72
12 VOLT TRUCK - BUS - COMMERCIAL									
3EE	3EE	450	550	100	19 5/16 (491)	4 3/16 (106)	8 1/2 (216)	BLK/BLK	60
3ET	3ET	500	610	140	19 5/16 (491)	4 3/8 (111)	9 7/8 (251)	BLK/BLK	60
8D	8D	1100	1375	290	20 3/4 (527)	11 1/8 (283)	9 7/8 (251)	BLK/BLK	16
8D	H8D	1450	1810	400	20 3/4 (527)	11 1/8 (283)	9 7/8 (251)	BLK/BLK	16
16TF	16TF	575	700	250	16 9/16 (421)	7 1/8 (181)	11 (279)	RUBBER	28
17TF	17TF	625	765	150	17 1/16 (433)	6 15/16 (176)	8 (203)	RUBBER	42
12 VOLT MILITARY - ORDINANCE									
6TL(mil)	6TL	825	1010	215	10 1/2 (267)	11 7/8 (302)	9 (229)	OLV/OLV	32
4HN (24 V)	4HN	235	-	28	10 1/4 (260)	5 1/4 (133)	9 (229)	BLK/BLK	72
12 VOLT GAS GOLF CAR AND AUTOMOTIVE									
24	24-50	420	475	70	10 1/4 (260)	6 13/16 (173)	9 (229)	BLK/BLK	72
24	24-775	730	-	125	10 1/4 (260)	6 13/16 (173)	9 (229)	BLK/BLK	72
26	26-50	450	510	65	8 3/16 (208)	6 13/16 (173)	8 (203)	BLK/BLK	90
53	53K-30	360	440	65	12 3/4 (324)	4 5/8(117)	8 15/16 (227)	BLK/BLK	90
911	911-60	300	366	65	8 3/16 (208)	6 7/8 (175)	6 7/8 (175)	BLK/BLK	90
6 & 12 VOLT SEALED AGM/GEL									
U1	AGM U1	35 AH	N/A	N/A	8 3/16 (208)	5 3/16 (132)	7 1/8 (181)	N/A	N/A
22NF	AGM 22NF	55 AH	N/A	N/A	9 7/16 (240)	5 1/2 (140)	9 (229)	N/A	N/A
24	AGM 24	75 AH	N/A	N/A	10 1/4 (260)	6 13/16 (173)	9 (229)	N/A	N/A
27	AGM 27	100 AH	N/A	N/A	12 1/16 (306)	6 13/16 (173)	8 7/8 (225)	N/A	N/A
31	AGM 31	120 AH	N/A	N/A	13 (330)	6 13/16 (173)	9 3/8 (238)	N/A	N/A
4D	AGM 4D	200 AH	N/A	N/A	20 5/8 (524)	8 11/16 (221)	9 1/2 (241)	N/A	N/A
8D	AGM 8D	250 AH	N/A	N/A	20 3/4 (527)	11 1/8 (283)	9 7/8 (251)	N/A	N/A
GC2	AGM 6V	220 AH	N/A	N/A	10 3/4 (273)	7 1/8 (181)	11 1/4 (286)	N/A	26